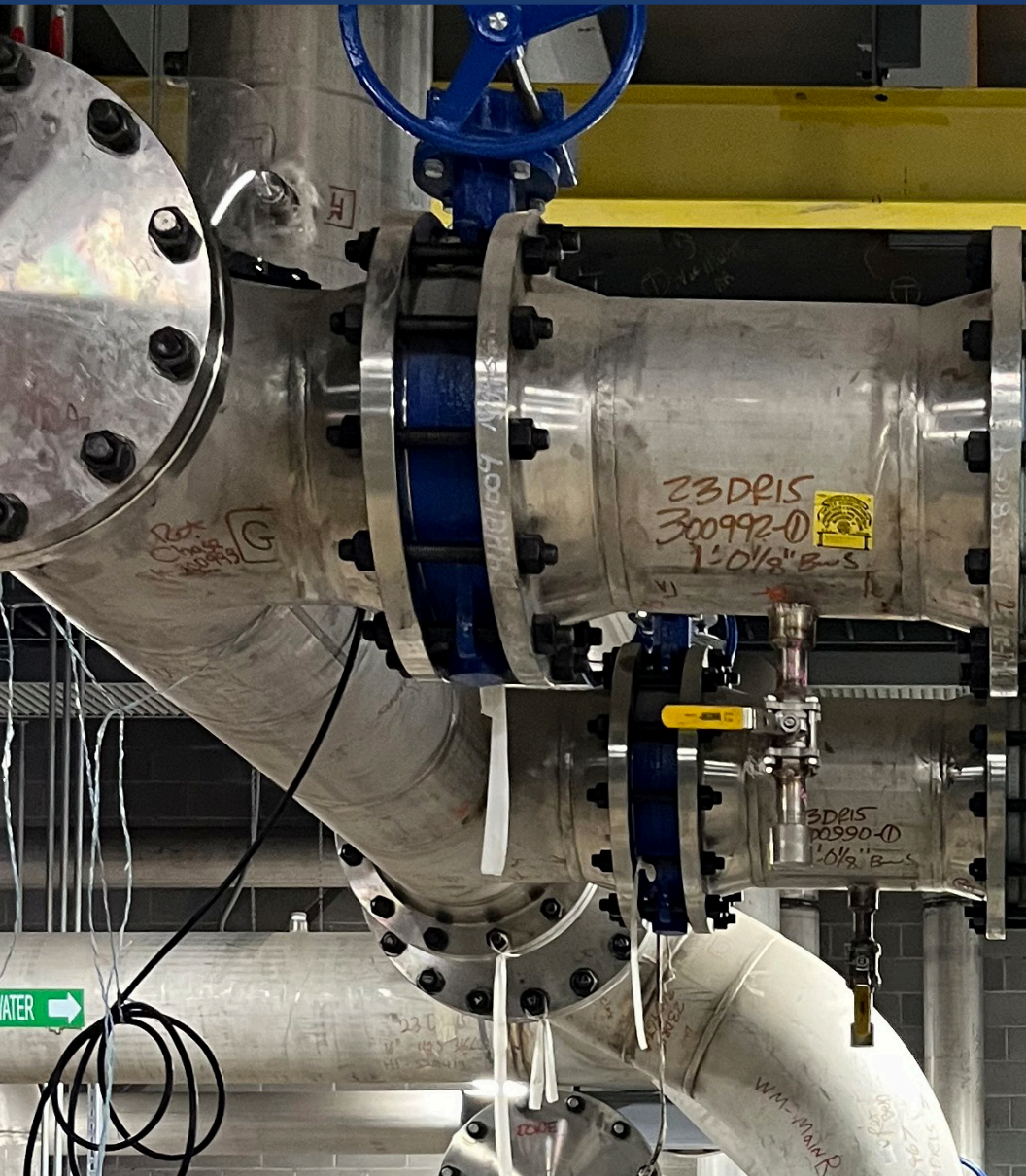


PRECISION UNDER PRESSURE: GRAYWOLF DELIVERS ON MELT SHOP EXPANSION



When a world-renowned steel processing facility launched its ambitious melt shop expansion, it needed a partner capable of precision execution, quick mobilization, and the ability to deliver under pressure. **GrayWolf rose to the challenge—delivering a critical Continuous Casting Machine (CCM) installation on an accelerated timeline**, while maintaining exceptional safety and quality standards.

Initially brought on site to execute the Cooling Water Circuit (CWC), **GrayWolf's outstanding performance and seamless project execution earned them another contract award to take on the highly complex caster scope**—just as their team was wrapping up the CWC portion. With skilled labor already mobilized and ready, the transition was a **strategic and cost-effective decision for the client**.

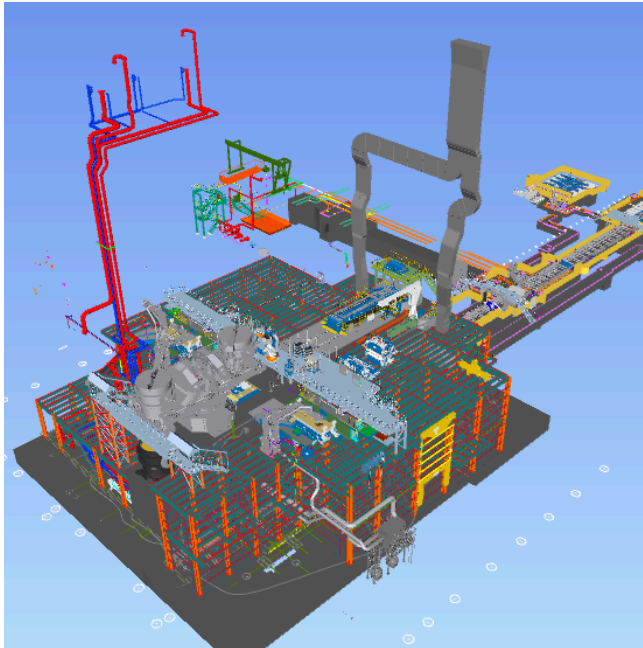
Client: Confidential

Project Duration: 11 Months

Industry: Steel Manufacturing

Graywolf[®]

A DBM GLOBAL COMPANY



PROJECT SCOPE HIGHLIGHTS

- + **400 tons of structural steel** self-performed (erection)
- + Installation and precision alignment of complex, proprietary equipment
- + Installation of **28,000 linear feet of piping systems**, including **20,000 ft of field routed small-bore piping** in congested, constrained spaces
- + Installation of piping supports
- + Onsite fabrication of small-bore piping
- + Installation of primary exhaust ductwork
- + Placement of **4 rooftop emergency water tanks** for caster cooling system
- + Testing, flushing, cleaning, and commissioning of all piping systems and equipment



EXECUTION EXCELLENCE

GrayWolf mobilized rapidly, scaling its workforce to **nearly 300 skilled employees** within **weeks** of Notice to Proceed—even as contract negotiations were still underway. Self-performing key scopes like steel erection, pipe installation, and equipment setting gave GrayWolf **tight control over quality, safety, and scheduling**.

To deliver specialized components of the project, GrayWolf partnered with expert subcontractors for:

- + Optical alignment
- + Scaffolding
- + Painting
- + NDE (Non-Destructive Examination)
- + Pipe flushing, cleaning, and testing

CHALLENGES & SOLUTIONS

Field-Built Piping in a Fluid Design Environment

With incomplete designs and a 3D model that was no longer being updated, GrayWolf faced a major challenge: no issued drawings for small-bore piping. The model provided a rough outline, but final execution required real-time field verification and creative problem-solving.

- + Over 20,000 feet of piping was field-routed.
- + Onsite piping engineers developed and walked down work packages daily.
- + Crews pulled physical measurements, rerouted systems around obstacles, and captured scope directly from P&IDs and site conditions.
- + GrayWolf's solution-oriented approach kept crews moving and minimized costly downtime.

Complex Equipment Alignment

Installing the proprietary casting equipment demanded precision alignments within 10/1000 of an inch.

Leveraging deep experience in equipment setting, GrayWolf delivered flawless results, ensuring the integrity of critical components.

Safety and Manpower

Despite the high-intensity environment, tight spaces, and long hours (teams worked 60–84 hours per week for nearly a year), GrayWolf achieved remarkable safety stats.

400,000

MANHOURS

300+

PEAK MANPOWER

11

MONTHS DURATION

Graywolf[®]

A DBM GLOBAL COMPANY



RESULTS

GrayWolf delivered this highly technical project on schedule, despite limited design information and constant change in scope. The team's ability to adapt, lead with expertise, and stay focused on execution made the difference.

The caster will be operational in the first half of 2025, with GrayWolf playing a key role in bringing this strategic expansion online.

KEY TAKEAWAYS

- + GrayWolf's self-perform model enabled efficiency, accountability, and agility.
- + Field-based, real-time engineering kept the project moving in a shifting design environment.
- + Rapid mobilization and close collaboration with the client made GrayWolf the go-to contractor for high-risk scopes.
- + Commitment to safety and quality drove performance without compromise.

GrayWolf's success on this project demonstrates our delivery of excellence, relentless precision, and unrivaled industrial experience. Construction challenges are unique to each site and design, but GrayWolf provides the seasoned expertise required to identify solutions that lead to cost and time savings for our clients.

As a partner, we're here to be your resource and answer your questions. Invite GrayWolf to join your team early in the process to support your next project with our comprehensive, multi-discipline expertise.

GET IN TOUCH: INFO@GRAYWOLF.COM

Graywolf[®]
A DBM GLOBAL COMPANY